

KEY FEATURES

- 200 Watt Max Power (LF)
- 20 Watt max Power (HF)
- 1.5 in - 38mm voice coil, Aluminium wire (LF)
- 0.8 in - 20 mm voice coil, Copper wire (HF)
- Neodymium magnet; Ferrofluid inside (HF)
- PA systems application



MEASURE CONDITIONS

- 3 litres
- Pink noise
- 150 - 5000Hz, 12dB/oct
- 2 hours

GENERAL SPECIFICATIONS	LF	HF
Nominal Diameter	4 in - 100 mm	0.8 in - 20 mm
Nominal Impedance	8 Ohm	4 Ohm
Nominal Rdc	5.3 Ohm	3.4 Ohm
Power handling (AES) (*)	100 Watt	10 Watt
Max Power	200 Watt	20 Watt
Frequency Range	150 ÷ 2000 Hz	2000 ÷ 20000 Hz
Voice Coil Diameter	1.5 in - 38 mm	0.8 in - 20 mm
S.P.L. (1w, 1m)	89.2 dB	95 dB
Nominal Fs	195 Hz	1450 Hz
Flux Density	0.95 T	1.3 T

MECHANICAL & SHIPPING INFORMATIONS

Net weight	0.81 Kg
Overall Diameter	101 mm
Overall Depth	54 mm
Baffle Cut Diameter	91 mm
Mounting bolt diameter	110 mm

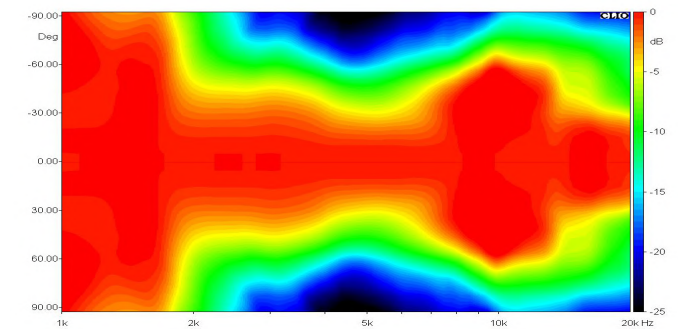
THIELE-SMALL PARAMETERS

Qms	4.90	Sd	51.53 cm ²
Qes	0.86	Vas	0.39 liter
Qts	0.73	u0	0.34 %
Fs	198 Hz	XMax	2.75 mm
Re	5.26 Ohm	Le	0.38 mH
Mms	6.15 g	Rms	1.56 Kg/s
Cms	0.11 mm/N	Efficiency Bandwidth	230.86
Bl	6.85 T*m		

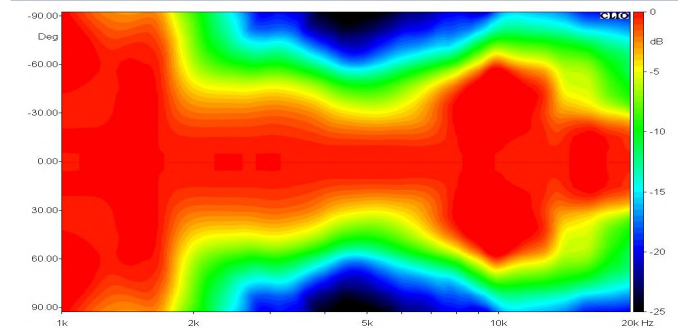
MATERIALS

Voice Coil Former Material	Fiber glass (LF) Kapton (HF)
Voice Coil Wire	Copper
Membrane Material	Paper (LF) Polyester (HF)
Membrane Shape	Exponential (LF) Dome (HF)
Magnet Type	Neodymium

HORIZONTAL DIRECTIVITY



VERTICAL DIRECTIVITY



DIAGRAM

